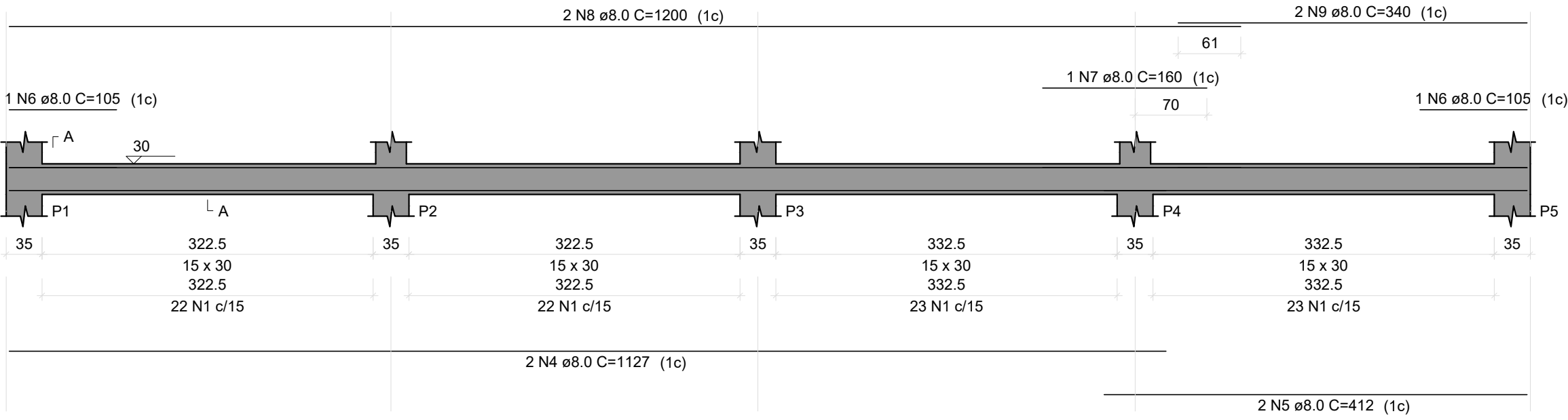


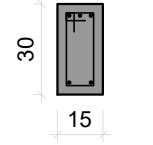
V1

ESC 1:50



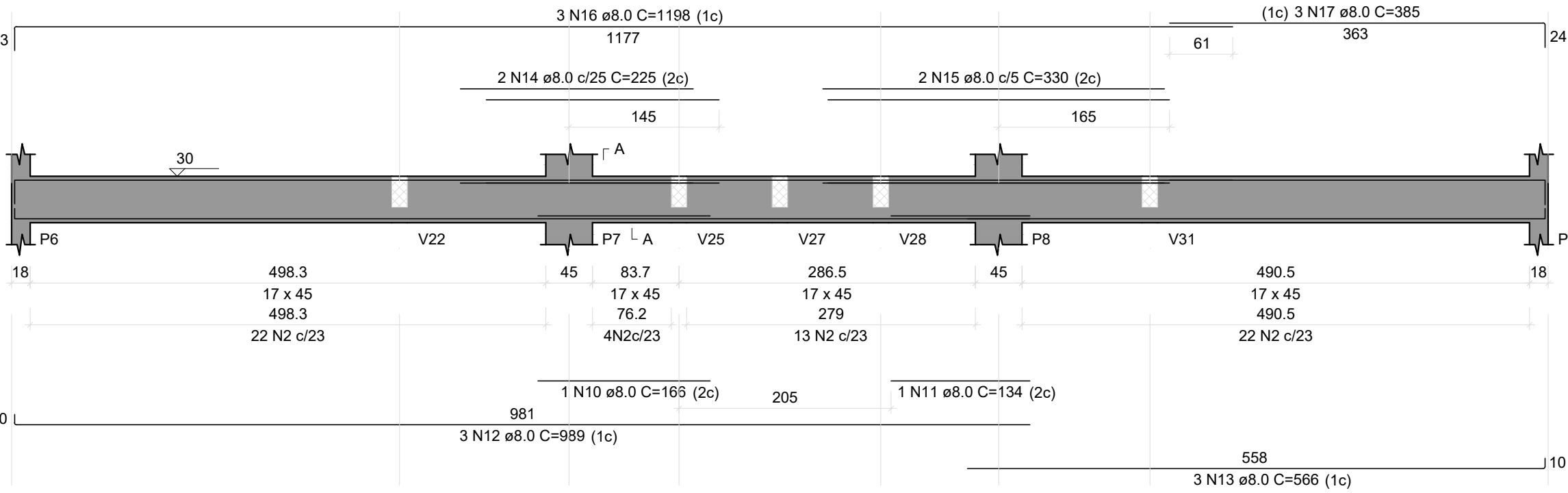
SEÇÃO A-A

ESC 1:25



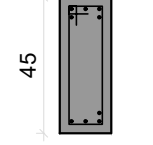
V2

ESC 1:50



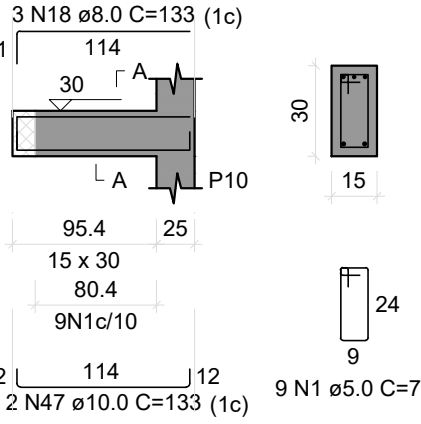
SEÇÃO A-A

ESC 1:25



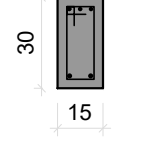
V3

ESC 1:50



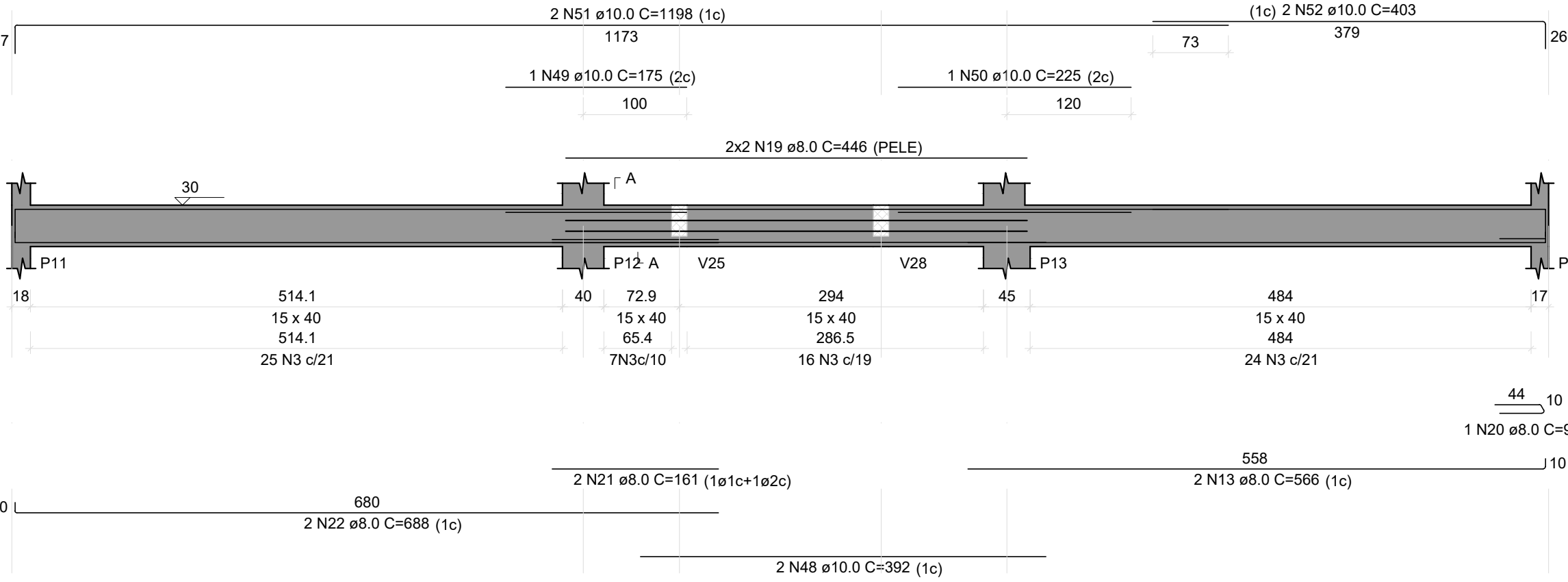
SEÇÃO A-A

ESC 1:25



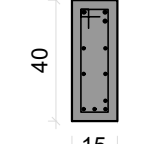
V4

ESC 1:50



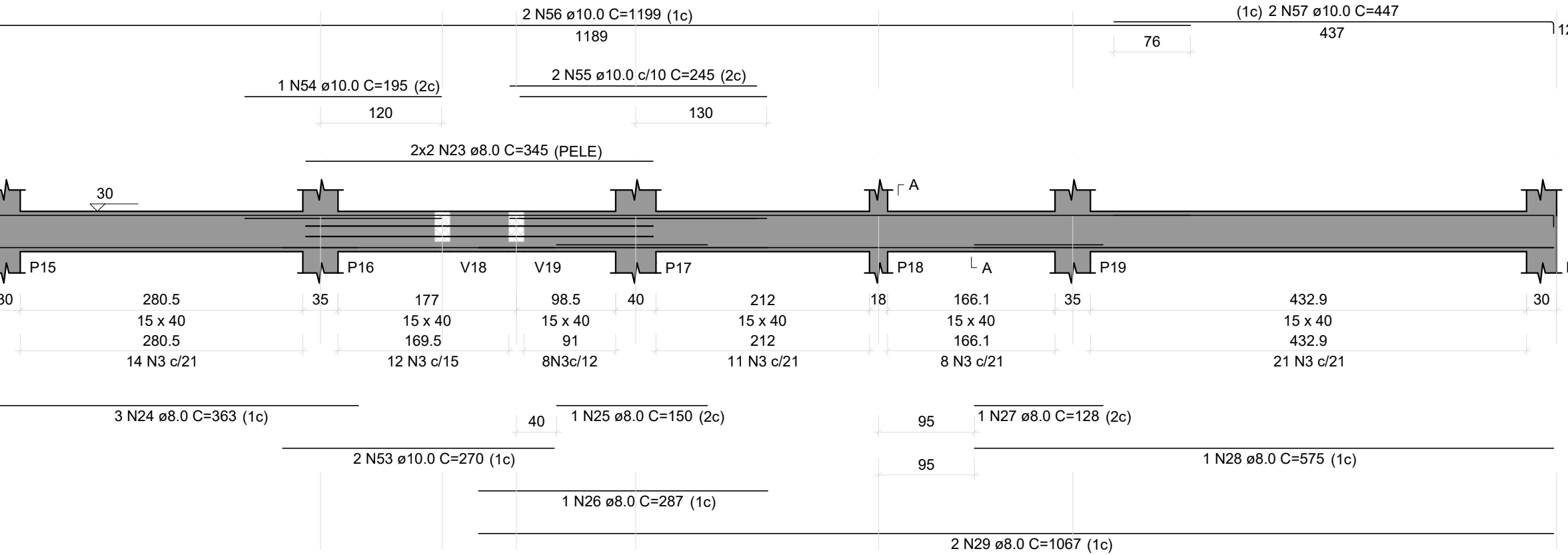
SEÇÃO A-A

ESC 1:25



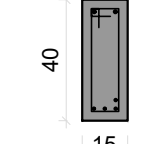
V5

ESC 1:50



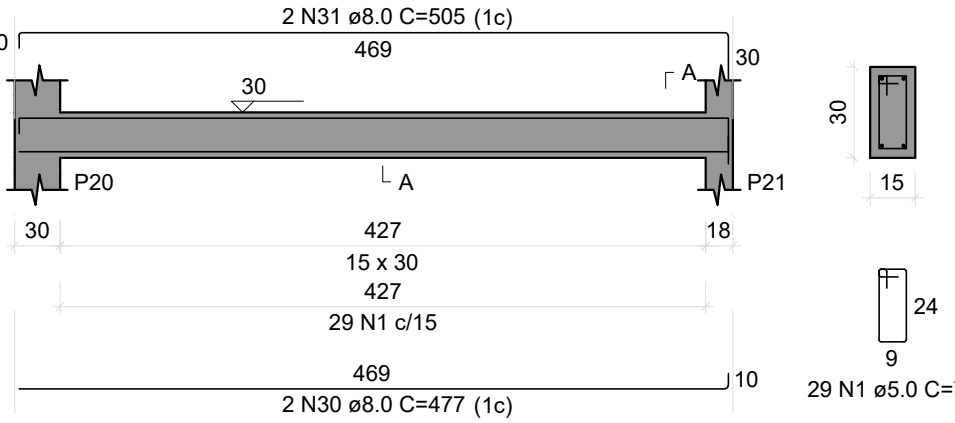
SEÇÃO A-A

ESC 1:25



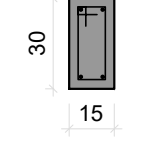
V6

ESC 1:50



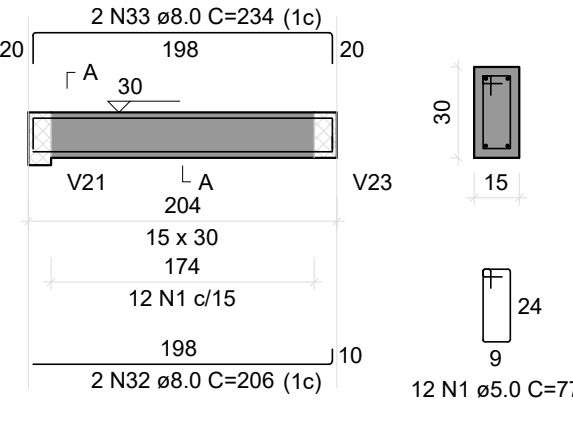
SEÇÃO A-A

ESC 1:25



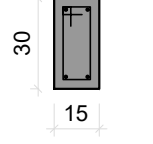
V7

ESC 1:50



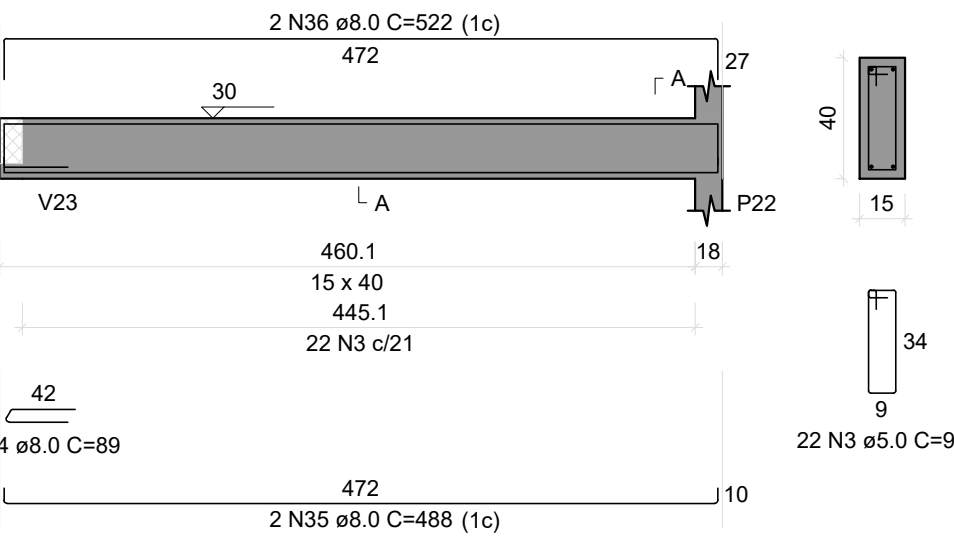
SEÇÃO A-A

ESC 1:25



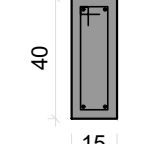
V8

ESC 1:50



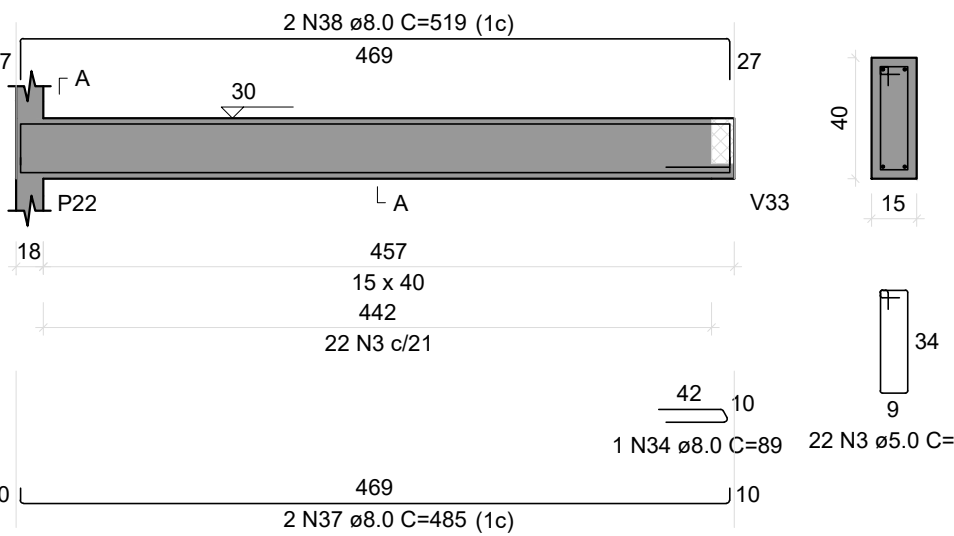
SEÇÃO A-A

ESC 1:25



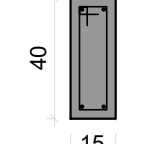
V9

ESC 1:50



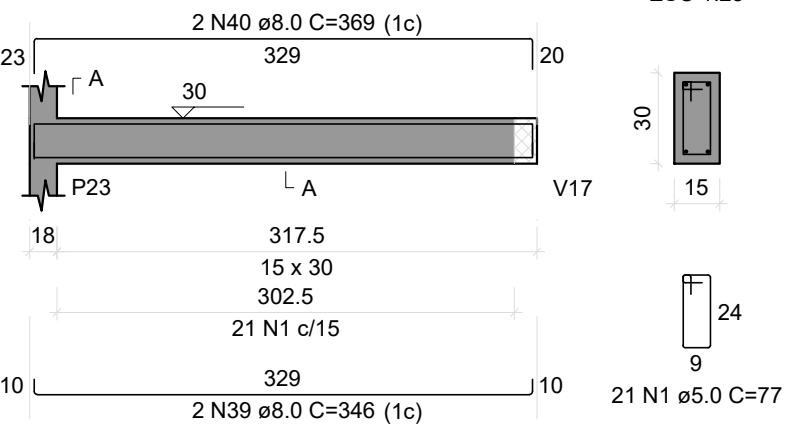
SEÇÃO A-A

ESC 1:25



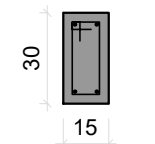
V10

ESC 1:50



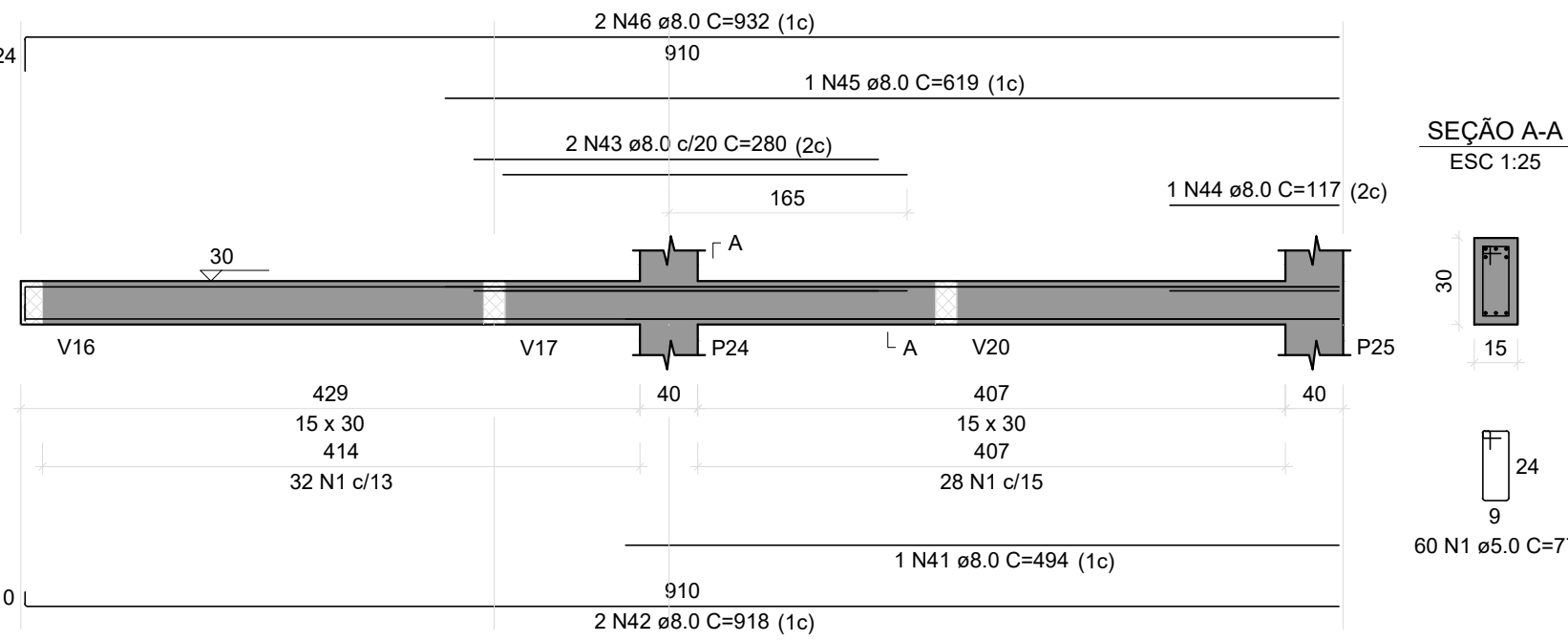
SEÇÃO A-A

ESC 1:25



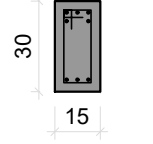
V11

ESC 1:50



SEÇÃO A-A

ESC 1:25



RELAÇÃO DO AÇO

AÇO	N	DIAM (mm)	QUANT	C.UNIT (cm)	C.TOTAL (cm)
CA60	1	5.0	221	77	17017
CA50	2	5.0	61	111	6771
	3	5.0	190	97	18430
	4	8.0	2	1127	2254
	5	8.0	2	412	824
	6	8.0	2	105	210
	7	8.0	1	160	160
	8	8.0	2	1200	2400
	9	8.0	2	540	680
	10	8.0	1	166	166
	11	8.0	1	134	134
	12	8.0	3	969	2907
	13	8.0	5	566	2830
	14	8.0	2	225	450
	15	8.0	2	330	660
	16	8.0	3	1198	3594
	17	8.0	3	385	1155
	18	8.0	3	133	399
	19	8.0	4	446	1784
	20	8.0	1	93	93
	21	8.0	2	161	322
	22	8.0	2	688	1376
	23	8.0	4	345	1380
	24	8.0	3	363	1089
	25	8.0	1	150	150
	26	8.0	2	287	574
	27	8.0	1	128	128
	28	8.0	1	575	575
	29	8.0	2	1067	2134
	30	8.0	2	477	954
	31	8.0	2	505	1010
	32	8.0	2	206	412
	33	8.0	2	234	468
	34	8.0	2	89	178
	35	8.0	2	488	976
	36	8.0	2	522	1044
	37	8.0	2	485	970
	38	8.0	2	519	1038
	39	8.0	2	346	692
	40	8.0	2	369	738
	41	8.0	1	494	494
	42	8.0	2	918	1836
	43	8.0	1	932	1864
	44	8.0	1	117	117
	45	8.0	1	619	619
	46	8.0	1	932	1864
	47	10.0	2	133	266
	48	10.0	2	392	784
	49	10.0	1	175	175
	50	10.0	1	225	225
	51	10.0	2	1198	2396
	52	10.0	2	403	806
	53	10.0	2	270	540
	54	10.0	1	195	195
	55	10.0	2	245	490
	56	10.0	2	1199	2398
	57	10.0	2	447	894

RESUMO DO AÇO

AÇO	DIAM (mm)	C.TOTAL (m)	PESO + 10% (kg)
CA50	8.0	421.7	183
CA60	10.0	91.7	62.2
	5.0	422.2	71.6

PESO TOTAL

CA50	245.2
CA60	71.6

Volume de concreto (C-25) = 4.65 m³
Área de forma = 72.96 m²